

# BL Series

ED Series Also Available  
Mechanical Edge-of-Dock Leveler

20,000; 25,000; 30,000 and  
35,000 lb. Dynamic Capacities

66", 72", 78" and 84" Deck Widths  
96", 102", 108" and 114" Overall Widths

## Affordable, Dependable Levelers for Every Operation.

Offering a range of lengths, widths, and dynamic capacities, the BL Series Leveler combines rugged durability with a competitive price. BL Series Levelers provide an operating range of 5" above and 5" below dock, with a minimum lip projection of 12 3/4" and an overall span of 27 3/4". Broad centerplate and lip are constructed of 55,000 lb. minimum yield steel tread plate. All Pioneer BL Series Levelers are exclusively equipped with 3 formed steel gussets, providing 30,000 lbs. of structural support in the stored position.

### Warranty

PIONEER offer a 2-year warranty on structural members. A 1-year warranty is provided on mechanical and miscellaneous parts (including materials, labor, and freight).

### Guarantee

PIONEER will provide our standard warranty or match any documented competitive warranty in the industry for comparable models. There is no fine print.



Pioneer's design provides **3 Formed Steel Gussets** for matchless structural support, offering 30,000 lbs. of solid support in stored position.



Our unique **Torsion Spring Lift Assist**, coupled with the **Pushover Bar**, is the BL Series' only moving part; allowing easy adjustment with simple hand tools - *minimizing down time and maintenance costs!*



The BL Series' convenient **BarLift** allows the operator to easily tilt the Leveler rearward, then push it forward onto the truck bed. *No pulling or straining required!*



### ED Series

Convenient **Lifting Hook** provides smooth raising and extension of Leveler onto truck.

Quality Dock Levelers

Long Lasting

Easy to Install and Operate

Safe



Rugged. Dependable. PIONEER.

# BL & ED Series

## Features & Specifications

All PIONEER Levelers meet or exceed the performance requirements of CS202-56., O.S.H.A., and A.N.S.I. MH14.1 - 1984

### Durability

- Centerplate and lip are constructed of 55,000 lb. Minimum Yield Steel Tread Plate.
- Formed, plate steel **Bump Blocks** and molded **Rubber Bumpers** protect dock face and Leveler from truck damage.
- **Continuous Hinge Design** with **Grease Fittings** included as standard with each unit.
- Unique **Torsion Spring Design** allows simple, precise adjustment.

### Easy Installation

- **Steel Rivets** located at either end of the centerplate hinge provide easy, forklift installation (ED Series Only).
- Optional **Self-forming Pan** allows unit to be recessed into dock face without concrete pit forming (specify ED66MP or BL66P).

### Simple Operation

- **Mechanical Torsion Spring Lift Assist** allows simple, one-man operation.
- Leveler raises and extends smoothly onto truck bed with use of convenient **Lifting Hook (ED Series)** or **Bar Handle (BL Series)**.
- Unit is easily recycled with truck in position and automatically returns to stored position upon truck departure.
- **Flat Models** available for pallet jack operation.

### Safety

- **Mechanical Torsion Spring Lift Assist** means no pulling or straining.
- **Solid Steel Gussets** provide centerplate support for end-loading trailers.

### Dealer Locations

PIONEER Dock Equipment is available nationwide. For the location of your nearest PIONEER Dealer call us toll free at **1.800.251.3382**.



Rugged. Dependable. PIONEER.

P.O. Box • Spring Hill, Tennessee 37174  
Phone: 931.486.2296 • Fax: 931.486.0316  
www.pioneerleveler.com

PIONEER offers a complete line of finely crafted, technologically advanced loading dock equipment, including **Mechanical and Hydraulic Pit Levelers, Edge-of-Dock and Hydraulic Top of Dock Levelers, Portable Dock boards, Vehicle Restraints, Dock Seals & Shelters, High Speed Fabric Roll-Up Doors**, and other quality accessories. Just call us toll free for personal, professional customer assistance and responses to all of your product needs.

toll free  
**1.800.251.3382**



ED Series

Competitively Priced and Built to Last

20,000; 25,000; and 30,000 lb. Dynamic Capacities

66", 72", 78" and 84" Deck Widths  
96", 102", 108" and 114" Overall Widths

### Simple Operation



①



②



③

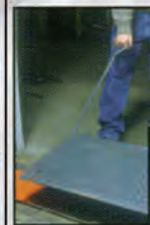


④

#### BL Series

- ① Lift the bar up from the stored position. The bar will halt angled toward the truck. Then pull the bar handle back and down towards you. The BL will automatically lock into position.
- ② Using the bar as a lever, pull the bar up and forward.
- ③ Lip automatically rides forward onto truck bed.
- ④ Very important to prevent damage to the bar, return it to the stored position.

#### ED Series



①



②



③



④

- ① Activate the Leveler by hooking the front hinge rivet with the convenient lifting hook and bringing it back towards you.
- ② Hook the Leveler by the hole provided on the right-hand side of the lip and bring the lip towards you.
- ③ Place the lifting hook on the rear hinge pin (behind the front hinge rivet) and push the Leveler forward onto the truck.
- ④ Leveler extends forward onto truck bed.

1210014