

SERVICE DOORS



Charlotte Bobcats Arena - Charlotte, North Carolina

Built To Last

The Cookson Company manufactures a custom Rolling Service Door that is hand-made with superior design. Every Cookson door is built with heavy duty, quality materials. Each service door includes: 50,000 life cycle design, structural angle guides and bottom bar, cast iron gears and stops, fabricated steel brackets, 20 psf windloading, and our exclusive FinalCote finish. Special Doors are also available for sizes up to 70' wide and 100' high as well as high cycle and ultra high cycle applications. For over 70 years, Cookson has manufactured premium rolling doors that have endured the test of time.

Best Value-Best Finish

Cookson rolling service doors offer excellent fit and finish designed to be a great value. Cookson service doors are available in a choice of superior finishes including FinalCote, ColorCote, Anodized Aluminum, and Stainless Steel. Cookson's FinalCote is the most durable standard finish available; it is scuff resistant, eliminates field painting and gives greater protection than prime paint. Salt spray tests have been conducted on FinalCote slats with no rust appearing after 1,000 hours. ColorCote, a powder coated finish that is available in 180 standard colors, is furnished from The Cookson Company's in-house, automated powder coating operations at all Cookson facilities; custom powder coat colors are also available. Anodized aluminum is available in clear and bronze; and Stainless steel is offered in a #4 finish.

Effortless Operation and Installation

Cookson doors are recognized in the industry as being the easiest to operate. Premium ball bearings, balanced designs, and precision construction ensure efficient, trouble-free use with minimal maintenance. Door size, building design and operational requirements should determine the operator type. Door installers prefer Cookson doors above other manufacturers due to their easy installation procedure and special design.

Weather Sealing

For exterior walls that will be exposed to the elements, we recommend a Cookson service door that includes full perimeter weather stripping. Weather stripping reduces thermal transfer and energy costs while protecting against wind-driven rain and debris.

Exceptional 2-Year Warranty

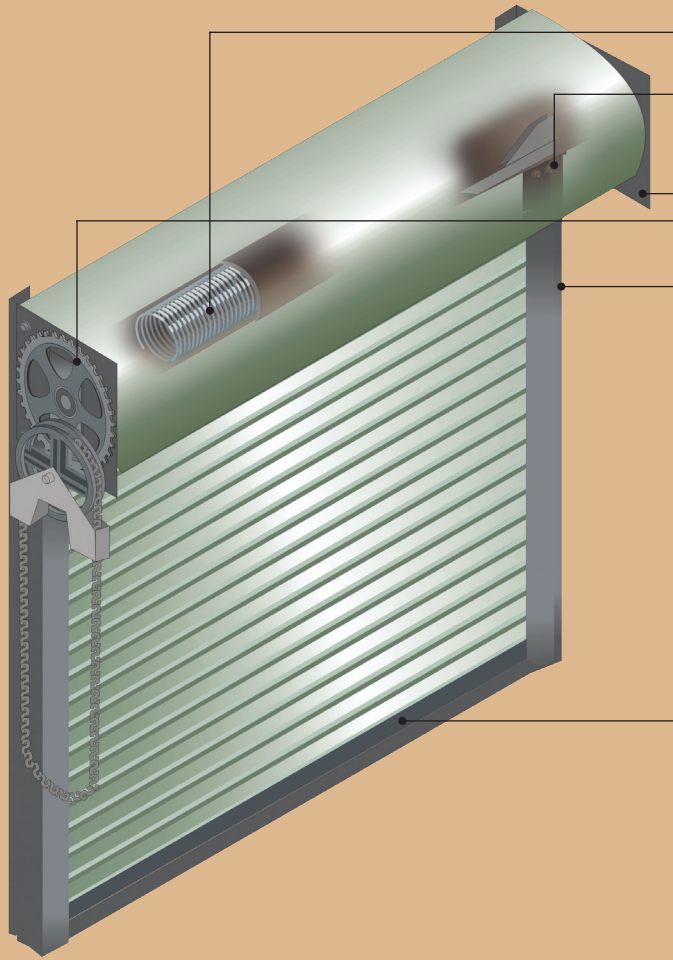
The Cookson Company guarantees its products from defects in materials and workmanship for a period of two years from date of factory shipment. The finest quality materials have been assembled by trained craftsmen to the exacting specifications of our design engineers producing a rolling door unsurpassed by other manufacturers. Should service door parts be required, they are available from two plant locations, Phoenix, AZ and Gastonia, NC.



The Cookson Company, Inc.

Dimensions shown are for initial design. For final design, specifications, and to view the complete Cookson Product line, visit Cooksondoor.com.

SERVICE DOORS



Built to Last

- Oil Tempered Torsion Springs Designed for 50,000 Life Cycles
- Cast Iron Stops
- 1/4" Thick (Minimum) Steel Plate Brackets
- Heavy Duty Cast Gears
- Structural Angle Guides and Bottom Bar

Choice of Finishes

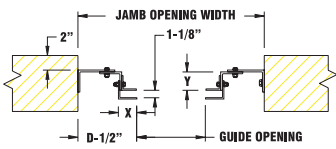
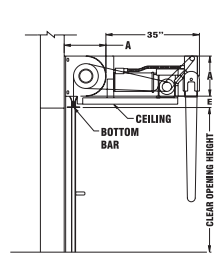
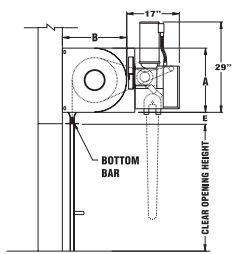
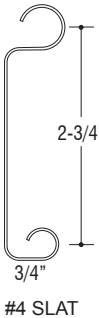
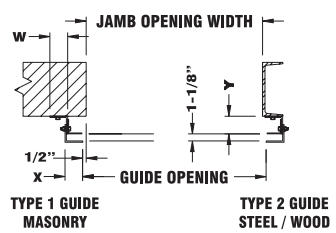
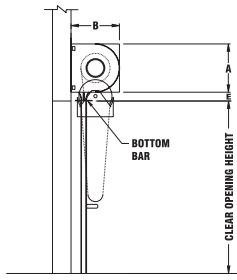
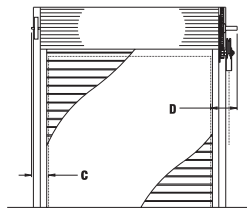
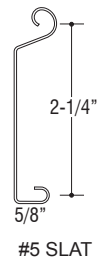
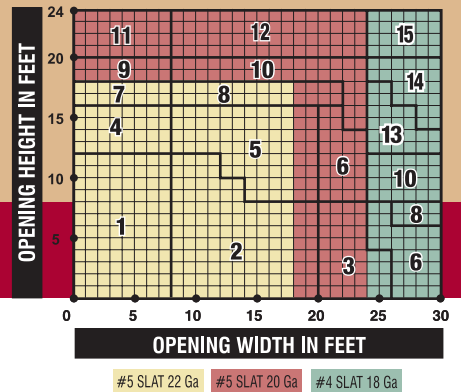
- FinalCote™ (Standard: Tan, Gray and White)
- ColorCote™ in 180 Standard Colors (Optional)
- Aluminum (Clear Anodize, Bronze Anodize)
- Stainless Steel (#4 Polish)

Choice of Operation

- Push-Up - limit 80 square feet or 8' high
- Chain
- Crank
- Motor

Determine Dimensions For Specific Door Size

- From chart below select proper Area Number for width and height of door.
- Refer to Selection Chart for dimensions.



AREA	COMPONENT DIMENSIONS						
	A	B	C	D	W	X	Y
1	13.0"	14.0"	6.0"	9.5"	2.5"	2.5"	2.5"
2	13.0"	14.0"	6.5"	9.5"	2.5"	3.0"	2.5"
3	13.0"	14.0"	6.5"	9.5"	2.5"	3.0"	3.0"
4	15.0"	16.0"	6.0"	9.5"	2.5"	2.5"	2.5"
5	15.0"	16.0"	6.5"	9.5"	2.5"	3.0"	2.5"
6	16.0"	16.0"	6.5"	9.5"	2.5"	3.0"	3.0"
7	16.0"	17.0"	6.0"	9.5"	2.5"	2.5"	3.0"
8	16.0"	17.0"	6.5"	9.5"	2.5"	3.0"	3.0"
9	18.0"	19.0"	6.0"	9.5"	2.5"	2.5"	3.5"
10	18.0"	19.0"	6.5"	9.5"	2.5"	3.0"	3.5"
11	20.0"	21.0"	6.0"	9.5"	2.5"	2.5"	3.5"
12	20.0"	21.0"	6.5"	9.5"	2.5"	3.0"	3.5"
13	20.0"	21.0"	6.5"	9.5"	2.5"	3.0"	4.0"
14	22.0"	23.0"	6.5"	9.5"	2.5"	3.0"	5.0"
15	24.0"	25.0"	6.5"	9.5"	2.5"	3.0"	5.0"

E = 2 1/2" standard; 3 1/2" with astragal; 5 1/2" with Featheredge

Dimensions are based on #5 Slat 22 ga. for doors to 18'0" wide, #5 Slat 20 ga. for doors 18'1" to 24'0" wide and #4 Slat 18 ga. for doors over 24'0" wide. Use of other slats and gauges may increase the dimensions shown.



The Cookson Company, Inc.

P.O. Box 23880
Phoenix, AZ 85063

Phone: (800) 390-8590
Fax: (866) 448-6804

Visit our website at Cooksondoor.com
Or e-mail us at Marketing@Cooksondoor.com
[Facebook.com/The.Cookson.Company](https://www.facebook.com/The.Cookson.Company)

© 2012