

FAST-FOLD® PNEUMATIC

HIGH PERFORMANCE FOLDING DOOR

Low Profile, Full Vision with a Distinct 'Air' of Dependability

The Fast-Fold Pneumatic door is a classy, yet economical alternative to impact doors and strip curtains. Running on standard shop air with very few moving parts, it is as dependable a door as you can get. Plus, with its clear PVC panels, it also offers full visibility. This full visibility allows you to see the other side of the door opening ensuring complete awareness of traffic and on both sides of the opening, improving traffic flow and ensuring the safety of those working around the door.

It is routinely used in a wide variety of interior warehousing and manufacturing environments. And when equipped with an optional stainless steel package, the Fast-Fold Pneumatic can be applied in select food processing, pharmaceutical and clean room applications.

Fast - Opens at up to 72 inches per second.

Safe - Offers full visibility.

Affordable - An economical alternative to impact doors or strip curtains. Also available in a surprisingly affordable stainless steel package.

Low Profile - With only 10 inches of side clearance and 14 inches of head projection required, the Fast-Fold Pneumatic door fits virtually anywhere.

Energy Efficient - Overlapping Puralon™ panels with vertical panel seams dramatically reduce energy loss.

Low Maintenance - Pneumatic power with few moving parts make this door efficient and dependable.

Takes a Hit - Withstands the impact of a fork truck with little or no damage, virtually eliminating downtime.



FAST-FOLD® PNEUMATIC

HIGH PERFORMANCE FOLDING DOOR

Model Name

- Rytec® Fast-Fold® Pneumatic Door

Size and Dimensions

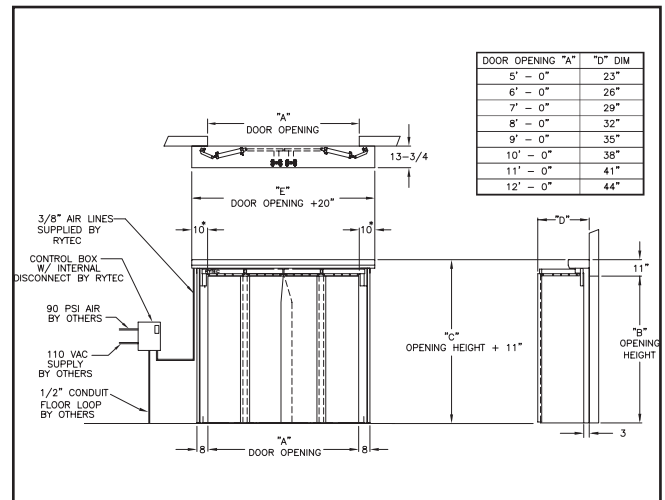
- Up to 12' W x 14' H
- 11" headroom above lintel
- 23-44" side projection (door width dependent)
- 10" side column width
- 14" head projection

Available Options

- Heat-sealed seams for USDA and FDA applications.

Warranty

- One-year limited warranty on materials and workmanship.



Ryflex™ floating rollers continually maintain contact with the track

Roller System

- Door equipped with Tec-Trak™ IA roller system.
- Nylon rollers are self-lubricating and self-aligning.
- Patented floating hinge flexes on the vertical plane, helping to maintain contact with the track, reducing wear and tear.



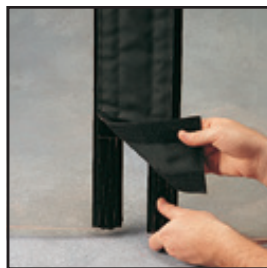
Pneumatic cylinders in door head

Pneumatic Operation

- Two pneumatic cylinders in door head provide years of trouble-free operation.
- Adjustable opening and closing speeds.

Door Panel

- Four 3/8-inch Puralon™ door panels with vertical seams.
- Velcro seams are standard. Optional heat-sealed seam for USDA and FDA applications are available.



Velcro seams create a seal between door panels

Electrical Controls

- Control box is 110 volt, single phase and is provided with an internal disconnect and a single point electrical connection.
- Includes a coalescent filter regulator with water trap.



Door control box



888-GO-RYTEC RytecDoors.com
 Tel 262-677-9046 Fax 262-677-2058
 One Cedar Parkway Jackson, WI 53037-0403