

# FAST-FOLD® PNEUMATIC

STAINLESS STEEL HIGH PERFORMANCE FOLDING DOOR

## Low Profile, Full Vision and Stainless Steel - All in One Door

The Fast-Fold Pneumatic Stainless Steel door is a classy, yet economical alternative to impact doors and strip curtains. Running on standard shop air with very few moving parts, it is as dependable a door as you can get. Plus, with its clear PVC panels, it also offers full visibility. This full visibility allows you to see the other side of the door opening ensuring complete awareness of traffic on both sides of the opening, optimizing traffic flow and increasing the safety of those working around the door.

It is routinely used in a wide variety of interior warehousing and manufacturing environments. With stainless steel construction the Fast-Fold Pneumatic Stainless Steel door can be applied in select food processing, pharmaceutical and clean room applications.

**Fast** - Opens at up to 72 inches per second.

**Safe** - Offers full visibility.

**Affordable** - An economical alternative to impact doors or strip curtains.

**Stainless Steel Construction** - Engineered for food processing and wash down areas, the Fast-Fold Pneumatic Stainless Steel door uses stainless steel for the head assembly, roller track, side frames and all other metal door components.

**Low Profile** - With only 10 inches of side clearance and 14 inches of head projection required, the Fast-Fold Pneumatic Stainless Steel door fits virtually anywhere.

**Energy Efficient** - Overlapping Puralon™ panels with vertical panel seams dramatically reduce energy loss.

**Low Maintenance** - Pneumatic power with few moving parts make this door efficient and dependable.

**Takes a Hit** - Withstands the impact of a fork truck with little or no damage, virtually eliminating downtime.



# FAST-FOLD® PNEUMATIC

STAINLESS STEEL HIGH PERFORMANCE FOLDING DOOR

## Model Name

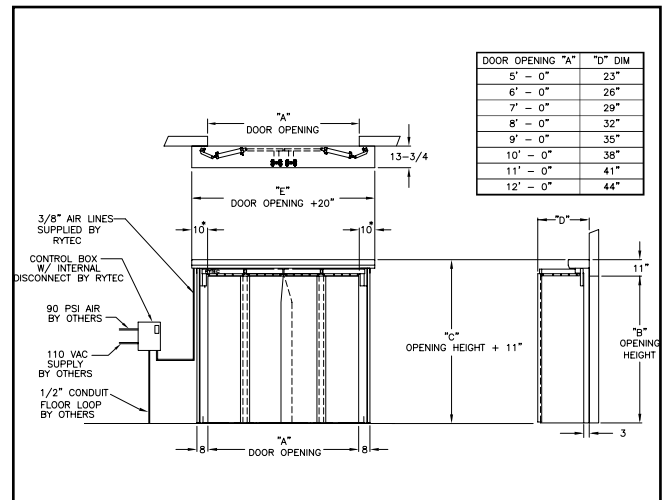
- Rytec® Fast-Fold® Pneumatic Stainless Steel Door

## Size and Dimensions

- Up to 12' W x 14' H
- 11" headroom above lintel
- 23-44" side projection (door width dependent)
- 10" side column width
- 14" head projection

## Warranty

- One-year limited warranty on materials and workmanship.



Ryflex™ floating rollers continually maintain contact with the track

## Roller System

- Door equipped with Tec-Trak™ IA roller system.
- Nylon rollers are self-lubricating and self-aligning.
- Patented floating hinge flexes on the vertical plane, helping to maintain contact with the track, reducing wear and tear.



Pneumatic cylinders in door head (non-stainless steel model shown)

## Pneumatic Operation

- Two pneumatic cylinders in door head provide years of trouble-free operation.
- Adjustable opening and closing speeds.

## Door Panel

- Four 3/8-inch Puralon™ door panels with vertical seams.
- Velcro seams are standard. Optional heat-sealed seams for USDA and FDA applications are available.



Velcro seams create a seal between door panels

## Electrical Controls

- Control box is 110 volt, single phase and is provided with an internal disconnect and a single point electrical connection.
- Includes a coalescent filter regulator with water trap.



Door control box



Stainless Steel Construction

## Designed for Clean Operation

- Door head assembly, roller track and side columns are constructed of stainless steel.
- Door panels do not touch the ground ensuring they won't come into contact with contaminants.



**888-GO-RYTEC** RytecDoors.com  
 Tel 262-677-9046 Fax 262-677-2058  
 One Cedar Parkway Jackson, WI 53037-0403