

# TURBO-SLIDE™

HIGH PERFORMANCE SLIDING DOOR

## High-Speed, Highly Insulated and Practically Bullet-Proof.

The superior design of the Turbo-Slide™ freezer door provides advanced thermal features to endure the rigorous demands of freezer environments.

Proprietary Flex-Panel® technology and fully closed cell EVA foam produce R-values ranging from R-17 (standard) up to R-40. Available in both sliding and bi-part designs, it is ideal for high cycle applications where increased productivity and energy efficiency are top priorities.

Moving at speeds of up to 125" per second, the Rytec Turbo-Slide significantly reduces cycle times compared to other freezer doors. In addition, a thermoplastic outer shell ensures superior impact resistance and durability, and minimal down time. And Armor Lock™ perimeter edge seal provides an airtight, watertight seal along all edges. Turbo-Slide is the professional's choice for day-in, day-out high performance.

**Fast** - Opens at up to 125 inches per second for improved traffic flow, productivity and energy conservation.

**Flexible Functionality** - Available in single sliding and bi-parting designs that allow for easy installation in numerous applications. Cold or warm side mount.

**Completely Sealed** - Armor Lock™ perimeter edge seal secures the thermal envelope by providing an airtight, watertight seal on all edges, even in the most frigid environments.

**Revolutionary Panel Design** - The Flex-Panel® high-tech core and outer construction are 50% lighter in weight than other panel doors. Thermoplastic shell and fully closed cell EVA foam provide R-values from R-17 to R-40. Superior impact resistance and easy realignment ensure secure seal along all edges.

**Total Digital Control** - The industry-leading, highly advanced System 4® door controller enables precise door positioning, infinite speed adjustments and total control of all door functions.



# TURBO-SLIDE™

HIGH PERFORMANCE SLIDING DOOR

## Model Name

- Rytec® Turbo-Slide™

## Size and Dimensions

- Up to 11' W x 18' H (Single Slide)
- Up to 16' W x 18' H (Bi-Parting)
- 16" clearance from wall and 7.125" from outside of each edge of door required for stay rollers
- 21" headroom above lintel
- All other clearances are door size dependent
- Left or right hand motor placement

## Safety

- Thru-beam photo eyes (two sets)

## Available Options

- FDA/USDA Sealed
- Perimeter skirt, velcro or sealed
- Custom logos or graphics on door panel

## Warranty

- One-year limited warranty on mechanical components.
- One-year limited warranty on electrical components.
- Five-year limited warranty on standard door panel material.



Blue thermoplastic outer shell with polyurethane elastomer perimeter edge

## Door Panel

- Core material is EVA foam with R-Values from R-17 (standard) to R-40.
- Blue or white thermoplastic outer shell is FDA approved for food contact use.
- Polyurethane elastomer edge seal remains flexible in extreme environments.

## Takes a Hit

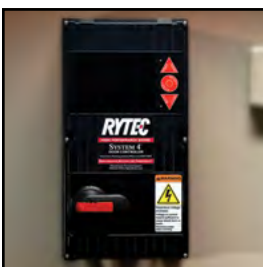
- Thermoplastic and polyurethane elastomer border are both flexible and easily auto-align in the case of accidental impact.
- Lightweight panel material simplifies realignment of door.



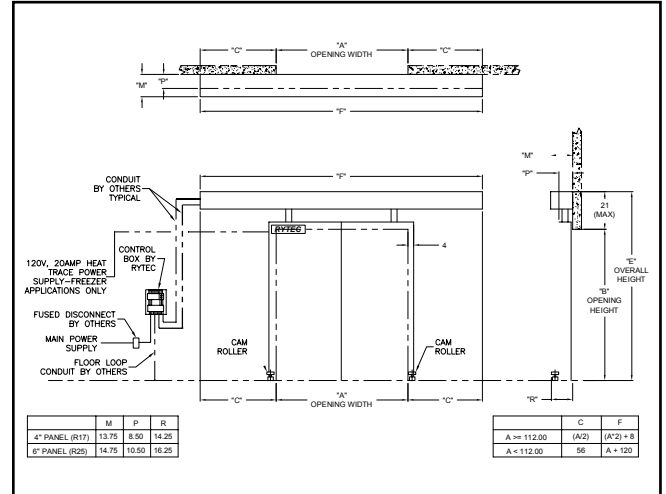
Stay-Roller allows for smooth opening and easy reset in case of door impact

## Electrical Controls

- System 4® controller housed in a NEMA 4X rated enclosure with factory set parameters.
- Intelligent processor monitors and controls power consumption.
- Advanced self-diagnostics for troubleshooting.



System 4 shown with optional rotary disconnect



## Bottom Sweep

- Multi-layered PVC coated polyester fabric.
- The rubber floor sweep adjusts to provide a complete seal ensuring the thermal envelope is secured.
- Hook and loop closure enables simple adjustment and replacement.



Adjustable/replaceable bottom sweep



Single Slide Design

## Defrost/Infiltration Options

- Heated gasket system to prevent icing.
- Standard 110V door defroster cable, self-limiting.



888-GO-RYTEC  
Tel 262-677-9046  
One Cedar Parkway Jackson, WI 53037-0403

RytecDoors.com  
Fax 262-677-2058