

ENTRANCE

For Your Safety,  
Carwash Closed at  
Approx. 30° and Colder

FOLD IN MIRRORS CLEARANCE 7 - 0 FOLD IN MIRRORS

**XRS**

*Vinyl Roll Up Door  
Product Catalog*



**AIRLIFT DOORS, INC.**



Visit our website for the latest updates on products and resources.

The screenshot shows the Airlift Doors, Inc. website. At the top left is the logo with the text "AIRLIFT DOORS, INC. Call toll free at (888) 388-4403". A navigation menu includes Home, Products, Support, Brochures, News, and Contacts. The main content area features a large image of a "Car Wash" entrance. To the right is a "Latest News" section with a sub-header "Important Information from Airlift Doors, Inc." and a small video thumbnail. Below this are three columns: "Alaska Door Packages" with a list of features (Alaska Extreme Door Package, Airlift's Openers, Radiant Heaters) and a "Learn More" button; "XRS Roll-Up Series" with a list of features (XRS Roll-Up Door Package, Watch Video Demonstration) and a "Learn More" button; and "Customer Support" with a paragraph about product quality and a "Learn More" button. Below the main content is a "Welcome to Airlift Doors!" section with a paragraph about the company's history and a "Request a Quote" button. To the right is another "Request a Quote" section with a paragraph and a "Request a Quote" button. Below that is a "Featured Products" section. At the bottom of the screenshot is the large text "www.AirliftDoors.com".

- Watch demonstrational videos
- Download installation guides & product brochures
- Get trouble shooting tips or email a technician for help
- Request a quote online or email our experienced sales staff



Find Airlift Doors on Facebook! [www.facebook.com/AirliftDoorsInc](http://www.facebook.com/AirliftDoorsInc)



Find Airlift Doors on Twitter! [www.twitter.com/AirliftDoors](http://www.twitter.com/AirliftDoors)



For more information on our other products and catalogs, please call or visit our website!



# COMPLETE INDEX

## XRS VINYL ROLL UP DOOR

XRS Vinyl Roll Up Door Packages.....	Page 1-2
XRS Operator Options.....	Page 3-4
XRS Sections Only.....	Page 5
XRS Panels & Components.....	Page 6
XRS Track.....	Page 7
XRS Strapeze Counterbalance System.....	Page 8
XRS Openers & Controls.....	Page 9-11

## HEATERS

Infra Red Heaters.....	Page 12-13
Infra Red Heater Replacement Parts.....	Page 14

## FORMS & TERMS

XRS Door Shop Drawings .....	Page 15-19
XRS Engineering Forms.....	Page 20-21
Terms & Conditions.....	Page 22

# PRODUCT WARRANTY

### XRS DOORS

<i>Panels</i>	<i>3 year</i>	<i>Electric Motor</i>	<i>1 year</i>
<i>Windbars</i>	<i>3 year</i>	<i>Control Components</i>	<i>1 year</i>
<i>Track</i>	<i>3 year</i>	<i>Photo Eyes</i>	<i>1 year</i>
<i>Door Components</i>	<i>3 year</i>		
<i>Pneumatic Operator</i>	<i>3 year</i>		



**AIRLIFT DOORS, INC.**

**PHONE: 1-888-368-4403**

**FAX: 612-588-7660**

**EMAIL: [sales@airliftdoors.com](mailto:sales@airliftdoors.com)**

**VISIT: [www.AirliftDoors.com](http://www.AirliftDoors.com)**





# XRS

Extreme Roll Up Series

## Fast, Reliable, Simple.

### The Extreme Vinyl Roll Up Door Series

*Great for busy carwash bays, rated for up to 80 cycles per hour!*

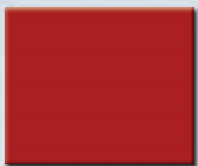
#### The XRS door features include:

- Breakaway design with automatic reset
- Complete weather seal including:  
Heavy duty top rubber seal & dual side brush seals
- Speeds adjustable for up to 34" per sec.
- Complete corrosion resistant components
- A simple, low maintenance design
- Individually replaceable components

**Door sizes available up to 14' x 14'**  
for custom door sizes consult factory.



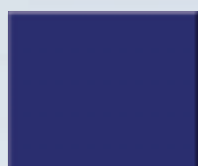
### XRS COLOR OPTIONS



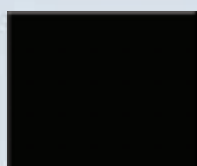
RED



YELLOW



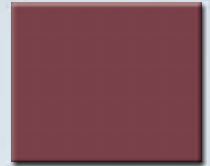
NAVY



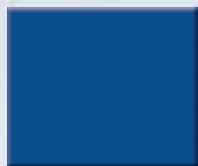
BLACK



GREEN



BURGUNDY



BLUE



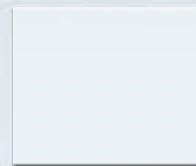
LIGHT BLUE



BEIGE



BROWN



WHITE



GREY

Actual color may vary slightly from color shown.  
Consult factory for colored vinyl swatch.  
For more colors consult factory.

All **XRS** Extreme Roll Up Door Packages include these standard features:

Breakaway design with automatic reset

Fiber reinforced pultruded plastic track

Complete weather seal including:

- Heavy duty top rubber seal
- Dual side brush seals

3 full vision panels standard, option for additional

Individually replaceable sections

Protective covers included

Inside or Outside Mount

All stainless steel hardware



Door sizes available up to 14' x 14'  
for custom door sizes consult factory.

## XRS Vinyl Door Packages

### Elite Plus Model

*Includes all standard features (above)*  
24" per sec. maximum speed  
No counterbalance system



Operator Options:  
Electric Operator  
Only

### Premium Plus Model

*Includes all standard features (above)*  
34" per sec. maximum speed  
Patented *Strapeze*® Counterbalance System  
Multiple operator options



Operator Options:  
Electric Operator



Pneumatic Operator



Chain Hoist



### XRS Electric Motor Features: (Available for Elite & Premium Models)



#### XRS Electric Motor:

- 3 phase, 240V motor, powered by 110V controller
- Corrosion resistant components
- Built in limit switches
- No cooling fan needed
- Rated for up to 80 cycles per hour
- Individually replaceable components



#### XRS Controller features:

- VFD (Variable Frequency Drive) for adjustable speeds
- 110V controller converts power to 3 phase, 240V output for motor
- Built in 24VDC control circuitry
- Nema 4X rated waterproof enclosure
- Internal circuit breakers
- UL listed
- Optional safety eyes & auto closing timer

### Pneumatic Opener Features: (Available for Premium Plus Model Only)

- 3 Year Unconditional Warranty
- Adjustable speeds up to 30"/second
- Exclusive design to Airlift Doors
- Hardcoat Aluminum construction
- Ideal for car wash environments
- Stainless steel brackets & hardware
- Stainless steel reinforced drive belt
- Built in cushion for smooth operation
- Pneumatic operator is ideal for high cyclage
- Low maintenance
- Independent open and close speeds
- Inside mount only



## XRS Manual Lift Option: (Available for Premium Model Only)



- Economical option for XRS door
- Simple chain hoist operation
- No electrical required
- Interior mount

- Fits on all size XRS doors
- Includes Strapeze<sup>®</sup> Counterbalance System
- Simple installation
- 1 year warranty

*Airlift Doors, Inc. has been a leader in the commercial door business for over 30 years.*

**AIRLIFT DOORS, INC.**

**EXPERIENCE**

Experience matters.

When you need the best, turn to the experts at Airlift Doors, Inc.





### XRS SECTIONS ONLY 10' HIGH DOOR

PN# R0210X10SO 10' x 10'

PN# R0212X10SO 12' x 10'

PN# R0214X10SO 14' x 10'

Windbars sold separately. Please specify door color.



### XRS SECTIONS ONLY 12' HIGH DOOR

PN# R0210X12SO 10' x 12'

PN# R0212X12SO 12' x 12'

PN# R0214X12SO 14' x 12'

Windbars sold separately. Please specify door color.



### XRS SECTIONS ONLY 14' HIGH DOOR

PN# R0210X14SO 10' x 14'

PN# R0212X14SO 12' x 14'

PN# R0214X14SO 14' x 14'

Windbars sold separately.  
Please specify door color.





**VINYL COVER ONLY**  
(Specify color.)



PN# R06R3000 10' COVER  
PN# R06R3001 12' COVER  
PN# R06R3002 14' COVER

**TOP SOLID PANEL**  
(Specify color.)



PN# R02IS1070 9'10" x 70"  
PN# R02IS1270 11'10" x 70"  
PN# R02IS1470 13'10" x 70"

**CLEAR FULL VISION PANELS**  
(Specify red, blue or black.)



PN# R02FV1018 9'10" x 18"  
PN# R02FV1024 9'10" x 24"  
PN# R02FV1218 11'10" x 18"  
PN# R02FV1224 11'10" x 24"  
PN# R02FV1418 13'10" x 18"  
PN# R02FV1424 13'10" x 24"

**BOTTOM SOLID PANEL**  
(Specify color.)



PN# R02IS1024 9'10" x 24"  
PN# R02IS1224 11'10" x 24"  
PN# R02IS1424 13'10" x 24"

**BOTTOM YELLOW SECTION**  
INCLUDES SAND TUBE



PN# R02BS1006 9'10" x 6"  
PN# R02BS1206 11'10" x 6"  
PN# R02BS1406 13'10" x 6"

**WINDBARS**



PN# R04R1000 9'10"  
PN# R04R1200 11'10"  
PN# R04R1400 13'10"

**COVER SUPPORT BAR**  
SINGLE



PN# R06R3030 119-3/4"  
PN# R06R3031 143-3/4"  
PN# R06R3032 167-3/4"

**COVER SUPPORT BAR**  
DOUBLE

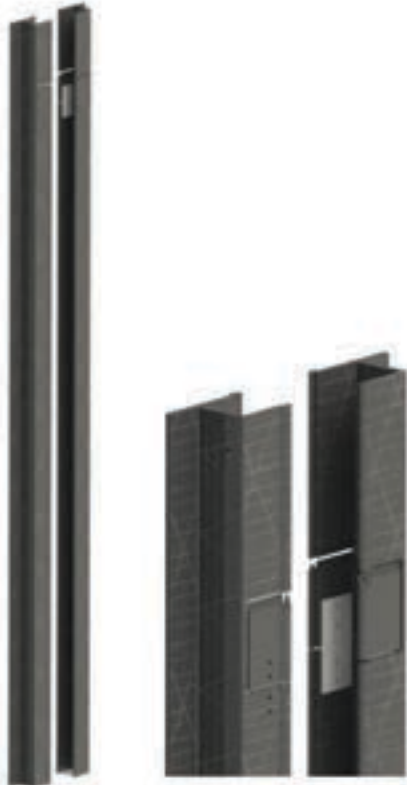


PN# R06R3060 119-3/4"  
PN# R06R3061 143-3/4"  
PN# R06R3062 167-3/4"

**TOP ALUMINUM COVER**



PN# R06R3005 10'  
PN# R06R3006 12'  
PN# R06R3007 14'



### XRS FIBER REINFORCED TRACK EACH

PN# R03R0082 8' 2" TRACK

PN# R03R0102 10' 2" TRACK

PN# R03R0122 12' 2" TRACK

PN# R03R0142 14' 2" TRACK

Brackets sold separately. Specify right or left side track.

#### TRACK RESET HINGE



PN# R03R3002

#### RESET BRACKET



PN# R03R2000  
Specify Left or Right

#### OPENER ROPE GUIDE BRACKET



PN# R08R2002

#### TOP RUBBER SEAL



PN# R10R1001 10'  
PN# R10R1002 12'  
PN# R10R1006 14'

#### SIDE BRUSH SEAL



PN# R10R1004 2"/ft  
PN# R10R1005 3"/ft

#### BEARING PLATE SS LH



PN# R05R2100

#### BEARING PLATE SS RH



PN# R05R2101





AIRLIFT DOORS, INC.

# Strapeze®

# XRS

Extreme Roll Up Series

A: PN# R07R2002 STRAPEZE PULLEY BRACKET

B: PN# R07R2006 STRAPEZE PULLEY CLEVIS

C: PN# R07R2005 STRAPEZE PULLEY DISK

D: PN# R07R3002 STRAPEZE PULLEY

E: PN# D04R1008 STRAPEZE PIN

F: PN# O02R9405 STRAPEZE DISK SLEEVE

G: PN# R07R3001 STRAPEZE START SPACER

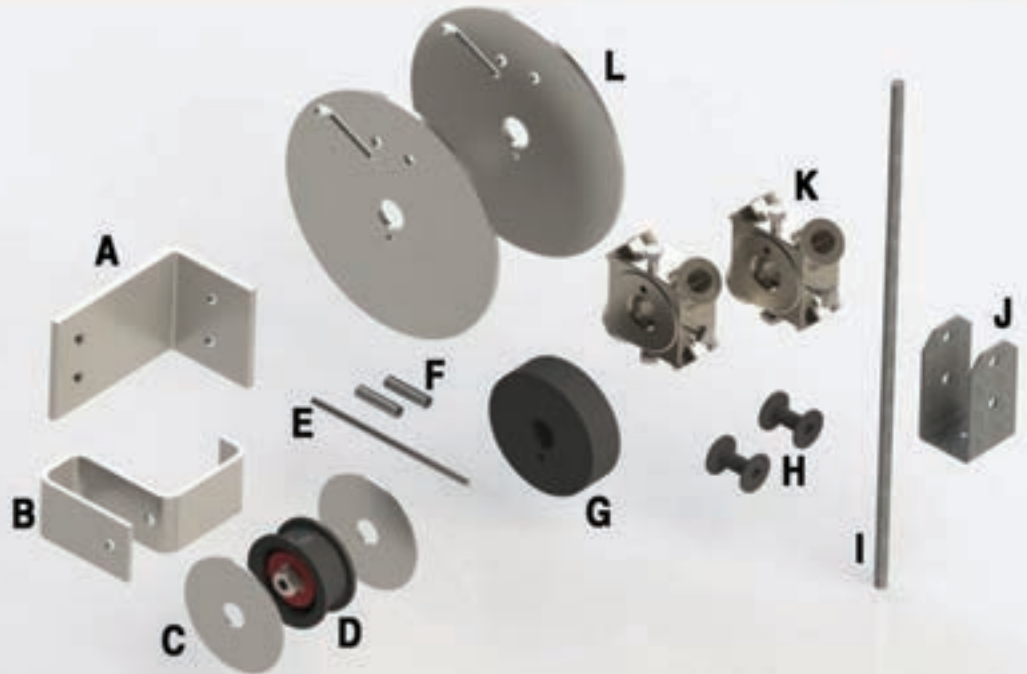
H: PN# D04R1013 STRAPEZE SPOOL

I: PN# D04R1014-1017 STRAPEZE ROD

J: PN# D04R1012 STRAPEZE SADDLE BRACKET

K: PN# D04R4022 NICKEL PLATED WINDING HUB

L: PN# R07R2001 STRAPEZE GUIDE DISK



### XRS STRAPEZE STRAP



PN# R07R1090 AW-B-90-0-0  
PN# R07R1099 AW-B-99-0-0  
PN# R07R1106 AW-B-106-0-0

### STRAPEZE COVER



PN# R13R1001 LEFT  
PN# R13R1001 RIGHT

### STRAPEZE GUIDE TUBE BRACKET



PN# R07R2003

### STRAPEZE GUIDE TUBE ONLY



PN# D04R1026 10'  
PN# D04R1027 11'  
PN# D04R1028 12'  
PN# D04R1029 13'  
PN# D04R1030 14'

### SHAFTLINE WITH TUBE



PN# R05R2010 10'  
PN# R05R2012 12'  
PN# R05R2014 14'

### XRS MOTOR COMPLETE W/ CONTROLS



PN# R08R5000 **ELITE**  
PN# R08R5000 **PREMIUM**

### XRS GEAR HEAD ONLY



PN# R08R5001-WR **WITH ROPE**  
PN# R08R5001-NR **NO ROPE**

### XRS MOTOR ONLY



PN# R08R5002

### XRS VFD CONTROL BOX (FOR ELECTRIC OPERATOR)



PN# R08R5003 **ELITE**  
PN# R08R5003 **PREMIUM**

### NEMA 4 3 BUTTON STATION (FOR ELECTRIC OPERATOR)



PN# O15R1010

### COMPLETE MOTOR COVER (FOR ELECTRIC OPERATOR)



PN# R13R1000 **LEFT**  
PN# R13R1000 **RIGHT**

### BANNER SAFETY EYES (FOR ELECTRIC OPERATOR)



PN# R09R1001 **Receiver**  
QS30VR3R  
PN# R09R1002 **Emitter**  
QS303E  
PN# O18R2002 **Bracket**

### OPENER MOUNTING BRACKET (FOR ELECTRIC OPERATOR)



PN# R08R2001  
2 BRACKETS REQUIRED PER OPENER

### CLOSING TIMER



PN# O19R3000



### PNEUMATIC CYLINDER ONLY



PN# R08R6164 8ft  
PN# R08R6176 10ft

### PNEUMATIC CONTROL BOX



PN# O13R1600

### NEMA 4-2 BUTTON STATION (PNEUMATIC)



PN# O15R1009

### TELCO EYES (FOR PNEUMATIC)



PN# O18R1003

### PNEUMATIC CYLINDER COVER



PN# R08R6005

### PNEUMATIC MOUNTING BRACKETS (2 PER OPENER)



PN# R08R6001

### PNEUMATIC REPLACEMENT BELT



PN# R08R6002

### PNEUMATIC SHAFT SPROCKET



PN# R08R6003

### PNEUMATIC LOWER DRIVE SPROCKET



PN# R08R6006

**PNEUMATIC VALVE 2  
POSITION AUTOMATIC**



PN# O16R1501

**PNEUMATIC REULATOR  
SMC COMPLETE**



PN# O17R3001

**PNEUMATIC OILER  
CKD L3000**



PN# O17R2001

**PNEUMATIC INLINE  
AIRLINE DRYER**



PN# O17R1000

**FLOW CONTROL  
FOR CONTROL BOX**



PN# O16R1602 EACH

**PNEUMATIC CYLINDER  
LUBE - 1 QT**



PN# D24R1004

**MOELLER CONTACT  
BLOCK N/O W/BASE**



PN# O16R1303 K10  
PN# O16R1304 KC10

**TITAN BUTTON**



PN# O16R1004 CLOSE LENS  
PN# O16R1005 OPEN LENS  
PN# O16R1002 BUTTON ONLY

**CHAIN HOIST**



PN# R08R6000



## DX-2 LOW INTENSITY SINGLE STAGE STAINLESS STEEL HEATER

The energy-saving qualities of infrared heating can now be applied in many wet, contaminated or harsh environments with the -SS Series of Stainless Steel Tube Heaters for Re-Verber-Ray.

Heater components are totally enclosed in a moisture resistant silicone sealed stainless steel control housing.



- PN# H01DX2-SS20 HEATER DX2 SS20' 75,000 BTU N/P
- PN# H01DX2-SS30 HEATER DX2 SS30' 100,000 BTU N/P
- PN# H01DX2-SS40 HEATER DX2 SS40' 125,000 BTU N/P
- PN# H01DX2-SS50 HEATER DX2 SS50' 150,000 BTU N/P
- PN# H01DX2-SS60 HEATER DX2 SS60' 150,000 BTU N/P

### DX2 CLEARANCES TO COMBUSTIBLES (IN INCHES)

MODEL NO.	MOUNTING ANGLE*	SIDE		TOP	BELOW
		FRONT	BEHIND		
DX2 (20, 30, 40) - 50, 60 [N.P.]	0°	9	9	6	47
	45°	39	8	10	47
	0°	29	8	6	47
	0°	9	9	6	47
20 ft. from burner	0°	7	7	6	30
DX2 (20, 30, 40) - 75 [N.P.]	0°	9	9	6	60
	45°	39	8	10	60
	0°	29	8	6	60
	0°	9	9	6	60
20 ft. from burner	0°	7	7	6	30
DX2 (20, 30, 40) - 100 [N.P.]	0°	14	14	6	66
	45°	39	8	10	66
	0°	29	8	6	66
	0°	16	16	6	66
20 ft. from burner	0°	7	7	6	30
DX2 (30, 40, 50) - 125 [N.P.]	0°	20	20	6	76
	45°	58	8	10	76
	0°	42	8	6	76
	0°	20	20	6	76
20 ft. from burner	0°	7	7	6	30
DX2 (40, 50, 60) - 150 [N.P.]	0°	24	24	6	81
	45°	58	8	10	81
	0°	42	8	6	81
	0°	23	23	6	81
20 ft. from burner	0°	11	11	6	44

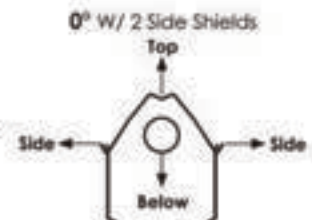
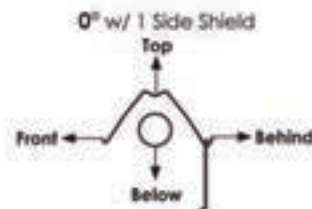
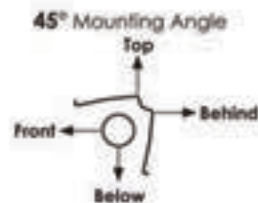
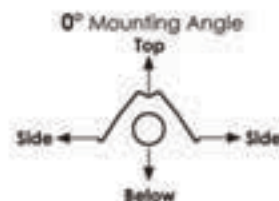
\* Heaters mounted on an angle between 0° and 45° must maintain clearances posted for 0° or 45°; whichever is greater.

#### PRODUCT SPECIFICATIONS

- BTU 75,000 - 150,000
- Gas Type Natural or Propane
- Tube Lengths 20 ft. - 60 ft.
- Combustion Tube 4" dia. Black Coated SS
- Radiant Tubes 4" dia. Black Coated SS
- Certification IAS, CGA, AGA, Outdoor Approval
- U or L Configuration
- Warranty 1-5-10 (Components-Tube-Burner)

#### PRODUCT FEATURES

- Coated 409 or 304 Stainless
- Highly Polished 304 Stainless Reflectors
- Watertight Electrical Connection
- Stainless Steel Hanging Accessories
- 304 Stainless Burner Assembly
- Stainless Steel 24" Pvc Coated flex connector
- Silicone Sealed Construction
- Silicone Carbide Hot Surface Ignition





# HEATERS

INFRARED



## DR HEATERS - COMPLETE

### HIGH INTENSITY, GAS FIRED, UNVENTED INFRARED HEATERS

The DR Series is commonly used in areas with high air infiltration, high ceilings and/or spot heating applications. The DR Series is available in a multitude of configurations, ranging from 30 to 160 MBTU/H with 3 different control options.

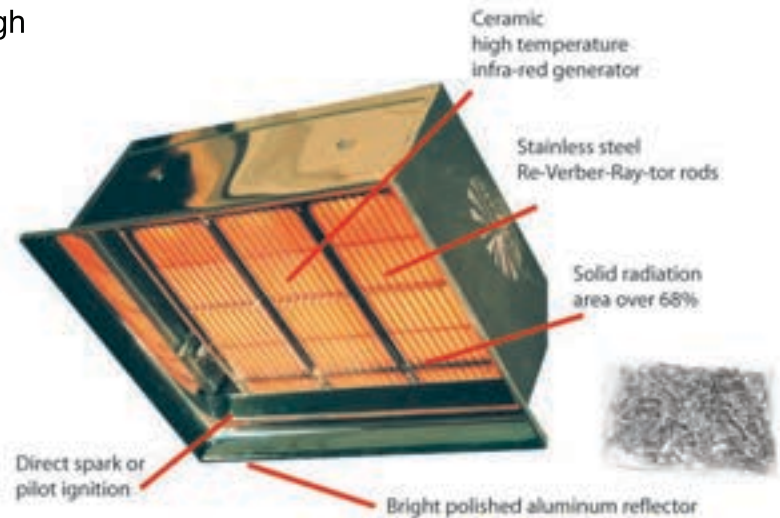
The DR Series of infrared heaters is ideal in applications where unvented high intensity heat offers design benefits or is preferred.

The DR Series is also ideal for unvented spot heating applications.

**NOT FOR USE IN CARWASH BAYS.**

#### STANDARD FEATURES:

- 5 year limited ceramic burner warranty.
- Exclusive Re-Verber-Ray ceramic burner provides maximum conversion to infrared radiation.
- Design A.G.A. Certified, U.L. Listed, accepted by F.I.A. and F.M.
- 3 different heater control systems - from manual to solid state ignition.
- Lower installation cost through compact modular heater design.
- Rugged non-corrosive materials in heater construction.
- Proven design, over 2,000,000 burners in use.
- Select high temperature, Re-Verber-Ray-tor rods increase heater temperature and efficiency.

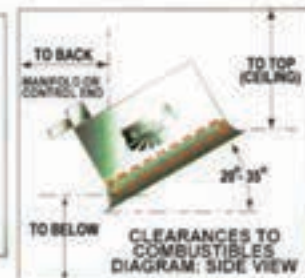
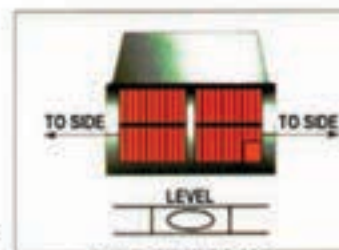


- PN# H05DR-30 HEATER DR 30,000 BTU
- PN# H05DR-60 HEATER DR 60,000 BTU
- PN# H05DR-75 HEATER DR 75,000 BTU
- PN# H06DRCS HEATER DR CHAIN SET

#### CLEARANCES TO COMBUSTIBLES(IN.)

MODEL NO.	SIDES	BACK	TOP	BELOW
DR 30	30	18	28	72
DR 30(S)	30	18	28	72
DR 60	32	18	40	72*
DR 75	48	30	42	98

\* Clearance is 80 in. when heater is fitted with a parabolic reflector.



#### DR SERIES ORDERING INSTRUCTIONS

**Model Number Format.** DR (BTU) (Gas Type) (Ignition Type) (Voltage). Example DR 60 NFS-2 120V

N= Natural Gas, P= Propane Gas

NMV-2/PMV-2= Manual Ignition, Constant Pilot, 100% Shutoff, Self Energizing. Includes RK-130 T-Stat and 35' of wire

MV Models are NOT for use in high wind applications

NFS-2/PFS-2= Direct Spark Ignition, 100% Shutoff. Specify 24V or 120V

**Note:** Circuit boards are potted on all models





AIRLIFT DOORS, INC.

# HEATERS

PARTS & ACCESSORIES

**THERMOSTAT  
RAIN TIGHT**



PN# H02TF-115

**4" INLET W/BIRDSCREEN**



PN# H02WIV-4

**4" ROOF TOP VENT  
PACKAGE**



Interior venting  
not included.

PN# H02RTVP-4

**STAINLESS STEEL CHAIN**



PN# H02THCS-SS PER FT  
PN# H02THCS 5' W/S HOOKS

**4" TUBE HANGER**



PN# H02TP-19B

**HEATER REFLECTOR  
BRACKET**



PN# H02BK

**TUBE COUPLER**



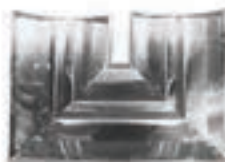
PN# H02TP-220 4" SS

**GLO-BAR IGNITER**



PN# H02TP-50

**HEATER 180° U-BEND  
PACKAGE**



PN# H02RUP-SS

**HEATER 90° ELBOW  
PACKAGE**



PN# H02REP-SS

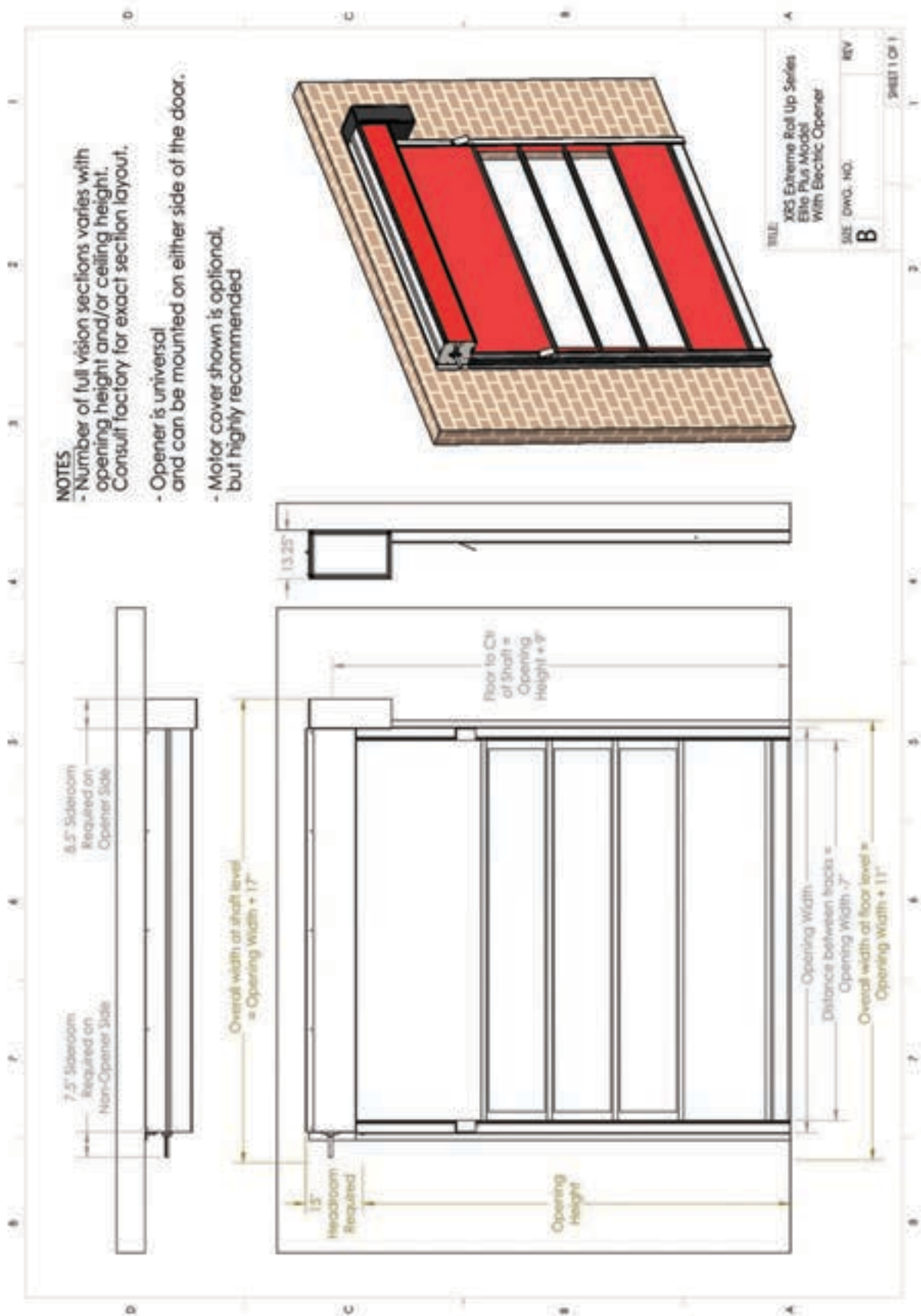
# FORMS

## XRS ELITE PLUS ELECTRIC SHOP DRAWING



AIRLIFT DOORS, INC.

### ELITE PLUS ELECTRIC



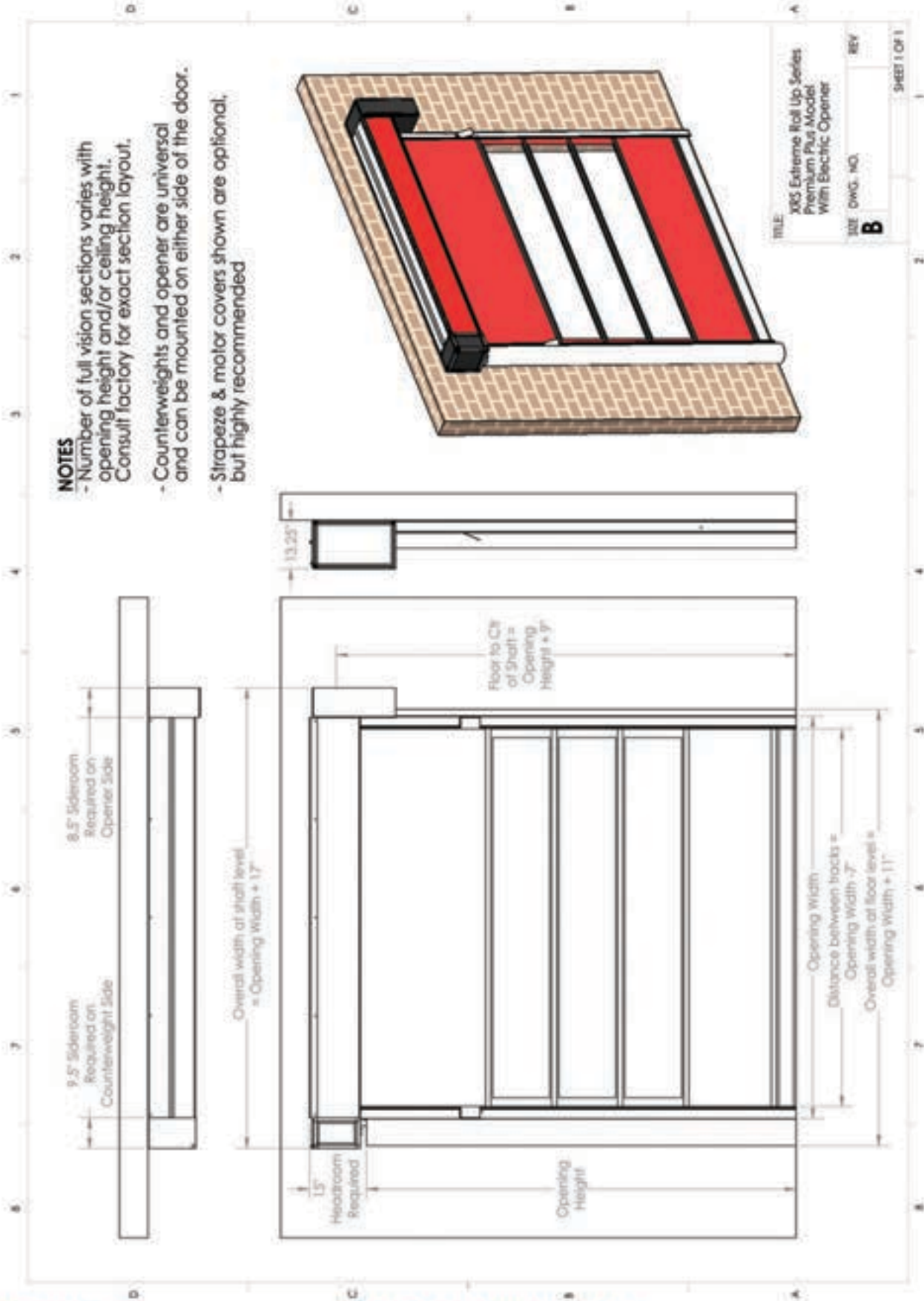




### PREMIUM PLUS ELECTRIC

#### NOTES

- Number of full vision sections varies with opening height and/or ceiling height. Consult factory for exact section layout.
- Counterweights and opener are universal and can be mounted on either side of the door.
- Strapeze & motor covers shown are optional, but highly recommended



TITLE:	XRS Extreme Roll Up Series Premium Plus Model With Electric Opener		
SIZE:	DWG. NO.	REV	SHEET 1 OF 1
		<b>B</b>	

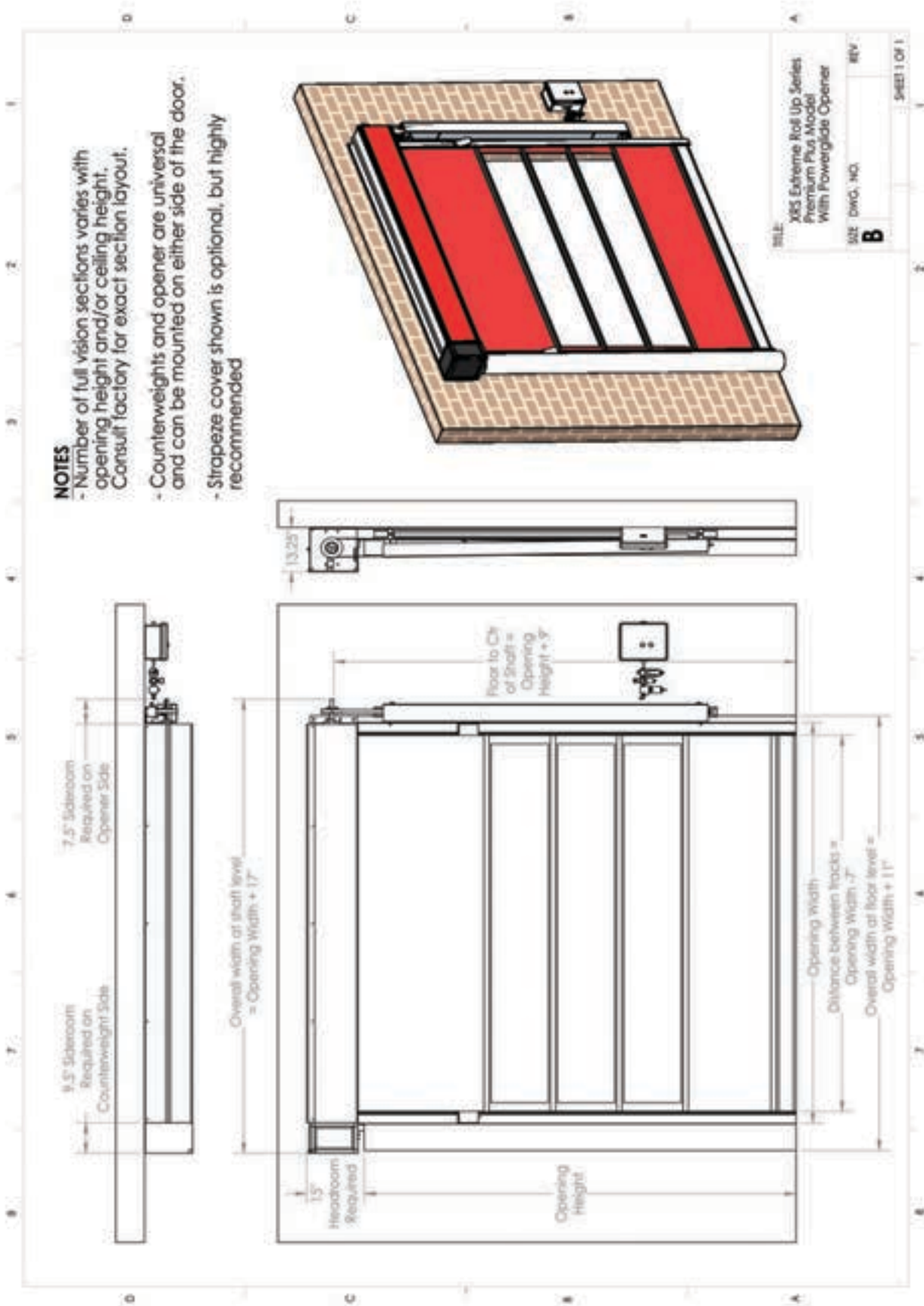
# FORMS

## XRS PREMIUM PLUS PNEUMATIC SHOP DRAWING



AIRLIFT DOORS, INC.

### PREMIUM PLUS PNEUMATIC



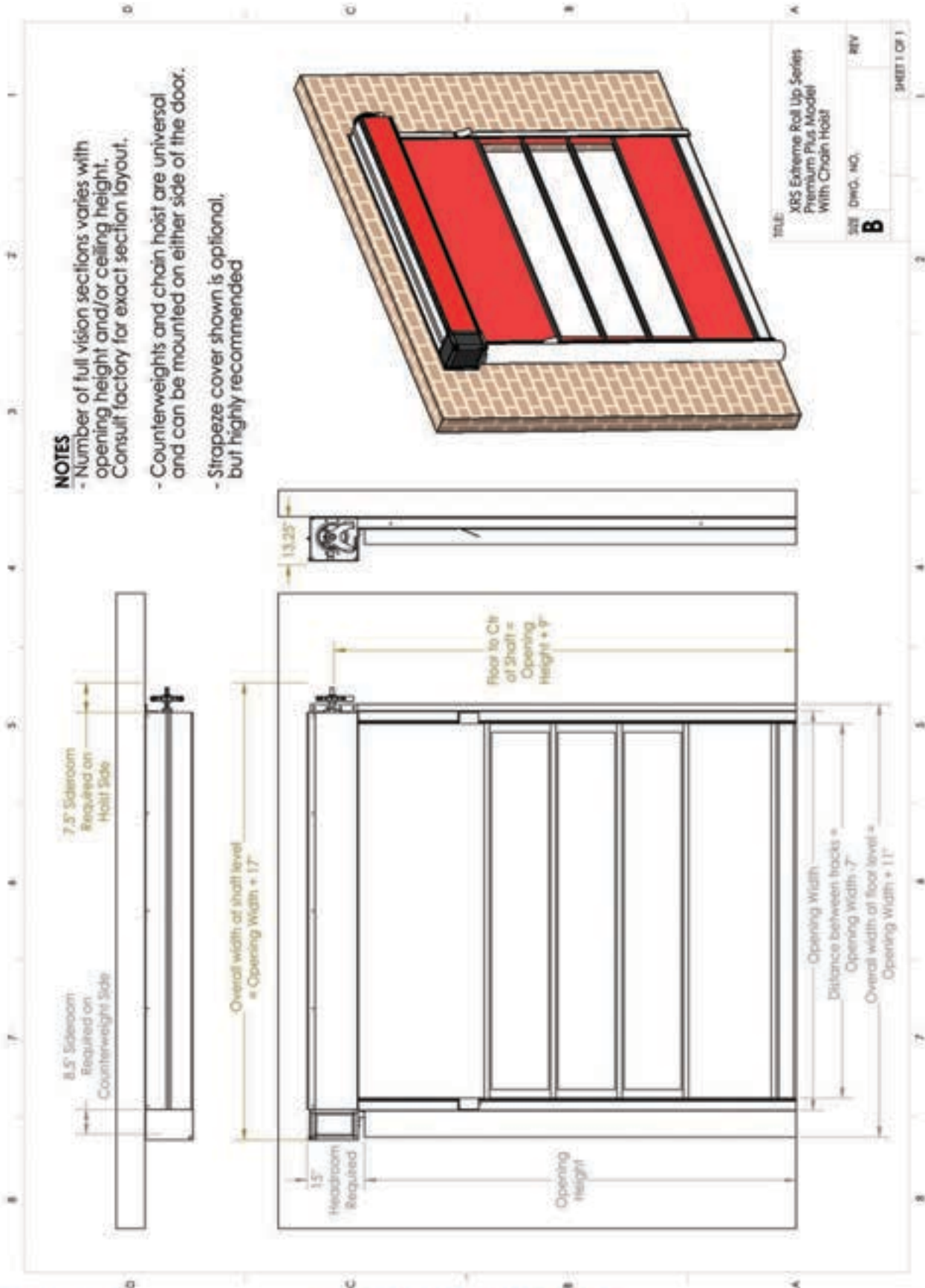




### PREMIUM PLUS CHAIN HOIST

#### NOTES

- Number of full vision sections varies with opening height and/or ceiling height. Consult factory for exact section layout.
- Counterweights and chain hoist are universal and can be mounted on either side of the door.
- Strapeze cover shown is optional, but highly recommended



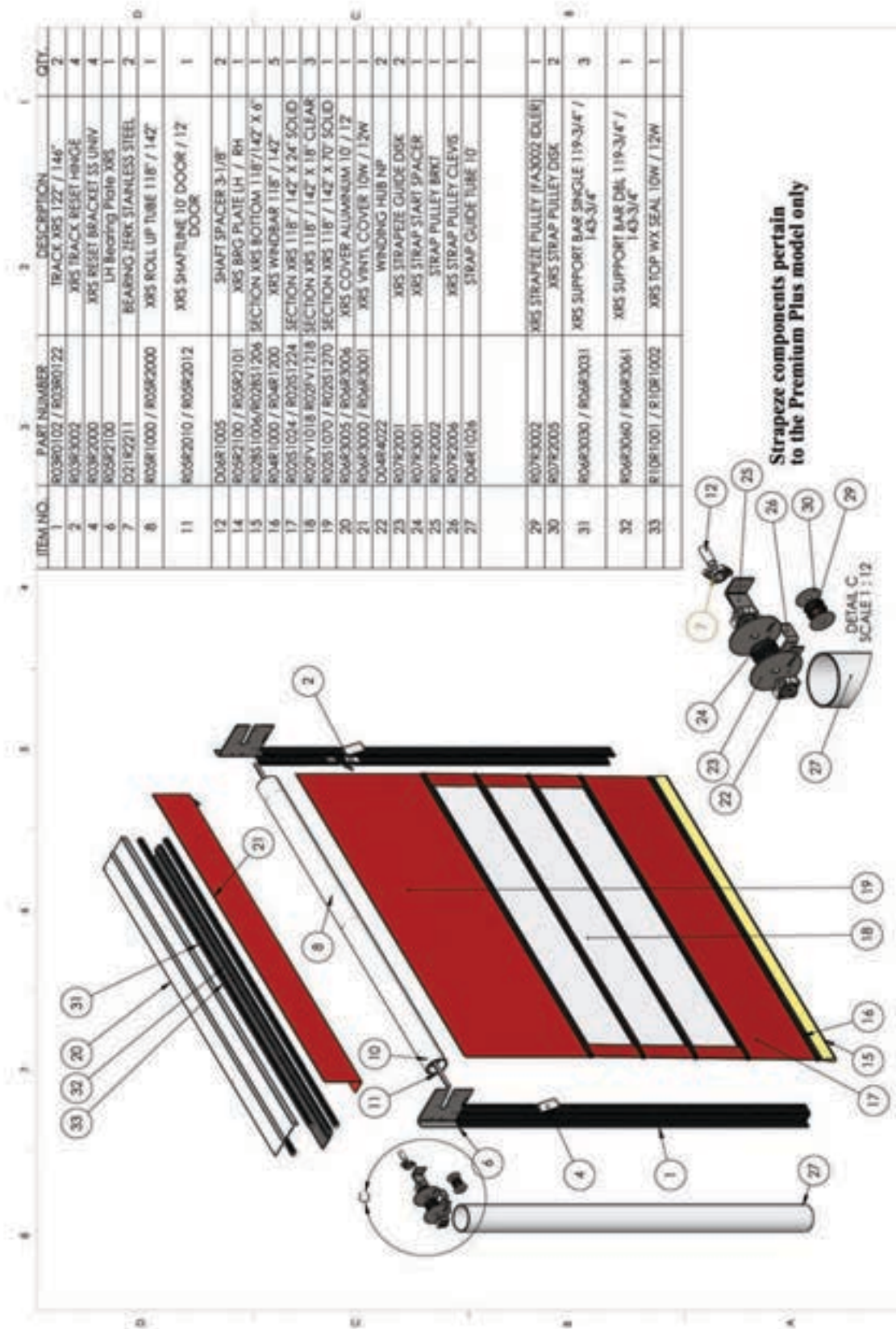
# FORMS

## XRS PREMIUM PLUS PARTS DIAGRAM



AIRLIFT DOORS, INC.

### PREMIUM PLUS PARTS DIAGRAM





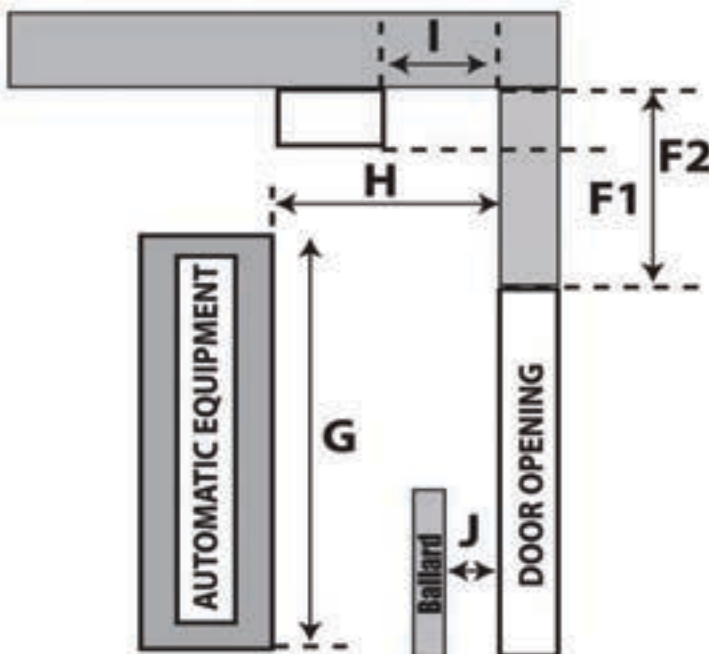
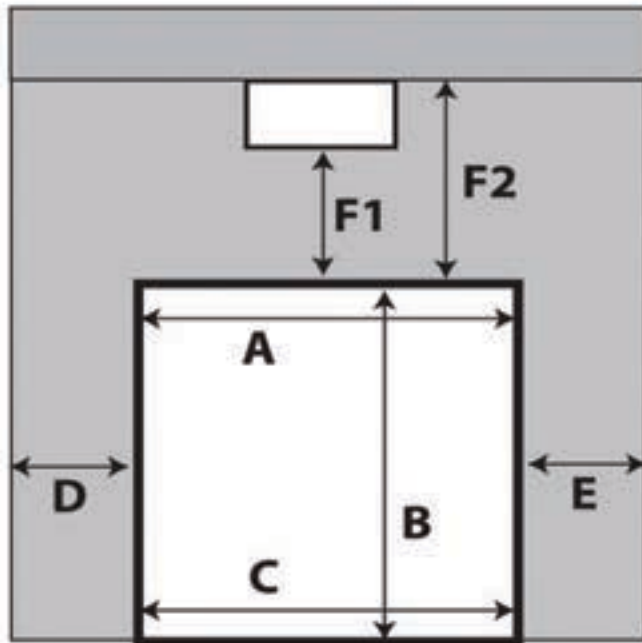


**AIRLIFT DOORS, INC.**  
**4700 OSSEO ROAD - MINNEAPOLIS, MN 55430**  
**PHONE: (612) 529-1000 - FAX: (612) 588-7660**  
**XRS ROLL UP DOOR ENGINEERING FORM**

PLEASE CIRCLE ONE

**ENTER / EXIT / BOTH DOORS**

If any measurements vary please fill out a measurement form for each door opening.



A: Top Opening Width \_\_\_\_\_

B: Finished Opening Height \_\_\_\_\_

C: Bottom Opening Width \_\_\_\_\_

D: Left Sideroom \_\_\_\_\_

E: Right Sideroom \_\_\_\_\_

F1: Headroom to Obstacle \_\_\_\_\_

F2: Headroom to Ceiling \_\_\_\_\_

G: Equipment Height \_\_\_\_\_

H: Backroom to Equipment \_\_\_\_\_

I: Backroom to Obstacle \_\_\_\_\_

J: If ballards exist please provide measurement

from ballard to wall \_\_\_\_\_

Interior or Exterior Mount: \_\_\_\_\_

Wall Material Mounting Track To: \_\_\_\_\_

Motor Mounted On: Driver Side / Passenger Side

Color: \_\_\_\_\_

By signing below I understand that the doors will be engineered specifically to the measurements I have supplied on this form. I take full responsibility for all information supplied on this form.

Reference Quote # \_\_\_\_\_

Signed by: \_\_\_\_\_

Date \_\_\_\_\_

# FORMS

## XRS CONVEYOR CUT-OUT DIAGRAM



AIRLIFT DOORS, INC.

### AIRLIFT DOORS, INC. XRS ROLL UP DOOR CONVEYOR CUT-OUT DIAGRAM

VIEW IS STANDING INSIDE THE BAY LOOKING OUT

ENTER THE APPLICABLE MEASUREMENTS

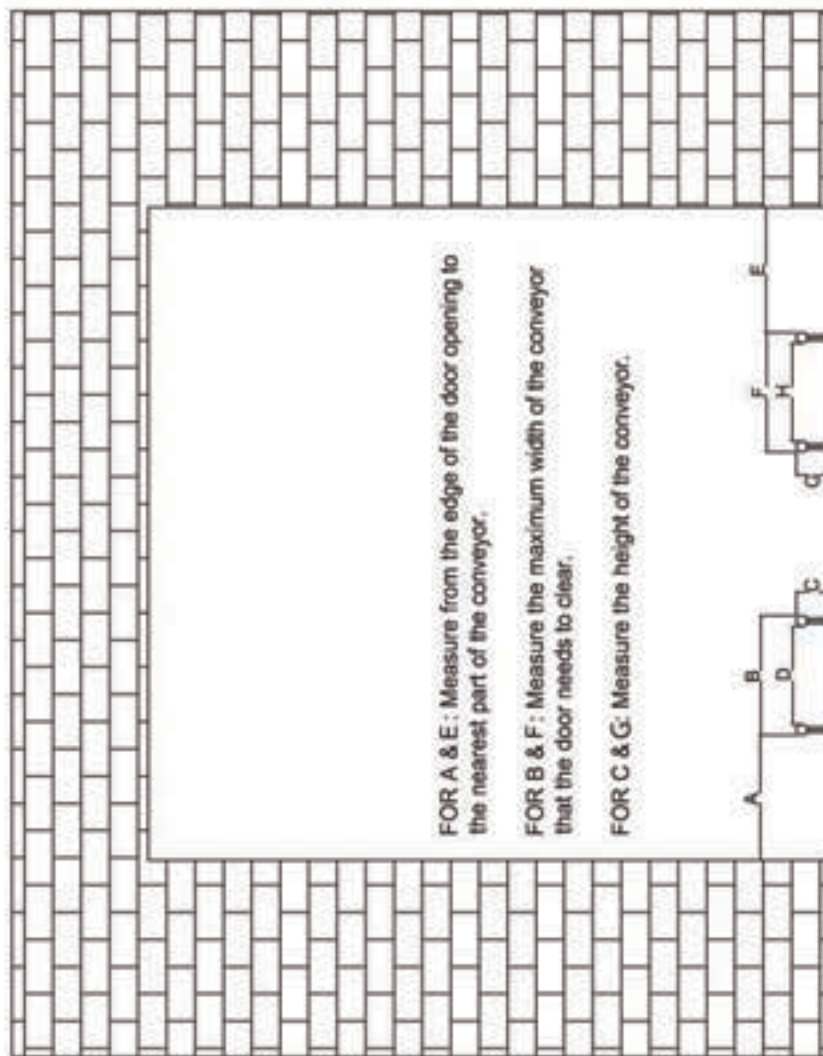
- A. \_\_\_\_\_ (Outside Width)
- B. \_\_\_\_\_ (Outside Width)
- C. \_\_\_\_\_ (Inside Width)
- D. \_\_\_\_\_ (Inside Width)
- E. \_\_\_\_\_ (Outside Width)
- F. \_\_\_\_\_ (Outside Width)
- G. \_\_\_\_\_ (Inside Width)
- H. \_\_\_\_\_ (Inside Width)

OTHER DOOR INFORMATION

I: ENTER OR EXIT DOOR

J: INTERIOR OR EXTERIOR MOUNT

K: CUT OUT NEEDED ON DRIVER'S SIDE, PASSENGER SIDE, OR BOTH



FOR A & E: Measure from the edge of the door opening to the nearest part of the conveyor.

FOR B & F: Measure the maximum width of the conveyor that the door needs to clear.

FOR C & G: Measure the height of the conveyor.

<p>Airlift Doors, Inc. 4700 Osseo Rd. Minneapolis, MN 55430 1-888-368-4403</p>	<p>XRS Roll-Up Door All Models</p>
	<p>Conveyor Cut-Out Diagram 10/25/10</p>



The following terms are general terms and conditions of sale and shipment. All conditions of sales are subject to change and are valid as determined by the latest terms and conditions printed by Airlift Doors, Inc. (referred to herein after as The Company).

**1. Quotations:** All quotations are only valid if written by an authorized representative of The Company. Written quotations are valid for 30 days unless terminated sooner by notice. Quotations are based solely on information provided by our customers or our interpretation of plans provided. It is the responsibility of the purchaser to verify that the information is correct.

**2. Acceptance of orders:** Orders may be placed through the following means: a) Purchaser may sign a written quote provided by The Company. b) Purchaser may issue a purchase order to The Company with a signature of person verifying the order. c) Orders may be placed verbally if the amount is equal to or less than \$1,000.00. However, it is the responsibility of the purchaser to get a verbal confirmation from The Company deeming the information accurate. All orders must include, at a minimum, the following information: Completed measurement sheet provided by The Company (for all door and operator orders), a detailed description of all products ordered, quantity of items, price, requested delivery date, and shipping instructions. All orders are subject to final acceptance by The Company and are subject to The Company's terms and conditions in effect at the time of acceptance.

**3. Change Orders:** All change orders must be in writing and a signed revised quotation is required for all orders containing a complete door, operator, or heater package.

**4. Terms-Regular:** Terms to purchasers of satisfactory credit are: 30 days net from the date of invoice. Cash discounts, when applicable, are noted on the face of The Company's invoice. All new customers must include credit references with the first order and will be required to send a certified check, money order, or provide a credit card (Visa and Master Card are accepted) before order will be shipped. Finance charges of 1-1/2% will apply per month for all past due invoices. NSF checks will be charged a \$30.00 service fee. We reserve the right to withhold shipments/deliveries should any invoice go beyond our specified terms.

**5. Special Order Product:** All special order product (deemed as any product not stocked by The Company) will require a 50% down payment before any product may be ordered or manufactured by The Company. Special orders are non cancelable and non returnable.

**6. Pricing:** All prices are F.O.B. Factory, (Minneapolis, Maple Lake or Vendor Facility). All prices shown in price lists are list prices in US Dollars and are subject to current discount rates. Customers are responsible for any and all bank charges associated with remitting payment. Prices are subject to change without notice.

**7. Minimum Billing:** Orders amounting to less than \$25.00 will only be accepted if charged to a current credit card.

**8. Shipping Terms:** All shipments are FOB Factory, (Minneapolis, Maple Lake or Vendor Facility). The Company may ship via UPS or common carrier depending on the size and weight of the product. All orders will be assessed a charge for basic commercial packaging. Customers may also request special packaging at an additional charge. Export packaging will be charged at an additional rate based on the requirement and the purchaser is responsible for any applicable export license and all associated costs involved with said license on any export project.

**9. Return Goods:** No product will be accepted without an RGA # authorized by The Company. Warranty returns will be inspected and credited or replaced at the discretion of The Company. Any new items that are returned within 30 days will be accepted with a 15% restocking fee. Purchaser is responsible for cost of shipping and insurance on any products returned. Credits will be issued at the price paid when the product was sold less any shipping charges associated with the return and applicable restocking fee.

**10. Responsibility and Title:** Title in the product shall remain with The Company as security only and until full payment is received by The Company. Risk of loss for the product shall pass to the purchaser upon shipment from F.O.B. point of shipment.

**11. Cancellation of Orders:** Prior to shipment, all orders other than special orders may be cancelled. However, purchaser will be responsible for any engineering, production, packaging, or staging costs involved with the order until the date that The Company is notified in writing of the cancellation.

**12. Freight Damage or Loss:** It is the responsibility of the purchaser to inspect the product received for accurate piece counts or any visible damage. In case of damage or shortage, the purchaser should note the information on the bill of lading and immediately file a claim with the shipping company.

**13. Warranty:** See individual product warranties. The Company will assume no responsibility for any labor charges unless agreed upon in writing in advance. The Company's liability with respect to this agreement or the sale of the product shall be limited to the amount paid by the purchaser for the products.

**14. Force Majeure:** The Company shall not be liable for any delays in shipment or damage to product caused by fire, flood, accident, riots, sabotage, governmental interference, strikes, or any other causes beyond The Company's control.

**15. Lead Times:** General lead times for stock items are as follows: 1) Parts orders may ship same day if received by The Company before 2:00 P.M. Central Time. Next Day Air or other rush services are available upon the request of the purchaser for additional charges. 2) Door and operator packages typically will ship within 1-2 weeks of receipt of the order and measurement form. Rush orders constitute anything under a week and may require an additional 5% fee depending on current shipping schedules.

**16. Laws of Minnesota:** The Customer agrees that all transactions between the Company and the Customer will be governed by the laws of the State of Minnesota and any dispute arising from this relationship will be litigated exclusively in state court in Hennepin County, State of Minnesota. The Customer consents to the jurisdiction of Minnesota court. In the event that it becomes necessary for the Company to institute suit or otherwise incur collection costs to collect any amount due by to the Company by the Customer, the Customer agrees to pay those costs of collection, including reasonable attorneys fees.



# TERMS

# Credit Application



Company Name:

Billing Address:

Shipping Address:

Phone:

Fax:

E-Mail:

Web Address:

Circle One:  Sole Proprietorship

Corporation

Partnership

Purchasing Contact:

Accounts Payable:

Business Type:

Years In Business:

Federal Tax ID #:

Signer's SSN #:

**Trade References:**

#1	#2	#3
<input type="text"/>	<input type="text"/>	<input type="text"/>
<input type="text"/>	<input type="text"/>	<input type="text"/>
<input type="text"/>	<input type="text"/>	<input type="text"/>
<input type="text"/>	<input type="text"/>	<input type="text"/>

**Terms:** All orders are invoiced at the time of shipment. Balance on all orders is due in 30 days, subject to a 1.5% finance charge per month on any unpaid balance over 30 days.

I hereby authorize the above named firms to furnish information requested by Airlift Doors, Inc. to process this application. I also, in my individual capacity (even though I may place a title or other designation next to my signature), unconditionally guarantee and promise to pay to Airlift Doors, Inc. all indebtedness arising from or relating to this application, and any and all collection fees or costs associated with collection of said debt.

Signature: \_\_\_\_\_

Date: \_\_\_\_\_

Print Name: \_\_\_\_\_ Title: \_\_\_\_\_



# **GUARANTEED - (GUAR·AN·TEED)**

**VERB -**

**ATTESTS TO THE QUALITY OR DURABILITY  
OF A PRODUCT OR SERVICE.**

**GUARANTEED** quality in our products.  
**GUARANTEED** that we stand behind our warranties.  
**GUARANTEED** shortest lead times in the industry  
on all standard size doors and openers.



**AIRLIFT DOORS, INC.**

Contact our experienced sales team today  
and see what Airlift Doors, Inc can offer you!

**1-888-368-4403**

**[www.AirliftDoors.com](http://www.AirliftDoors.com)**





**AIRLIFT DOORS, INC.**

**[www.AirliftDoors.com](http://www.AirliftDoors.com)**

Email: [sales@airliftdoors.com](mailto:sales@airliftdoors.com)

Toll Free: 1-888-368-4403

Fax: 612-588-7660

*For more information  
on our other products  
and catalogs, please call  
or visit our website!*

